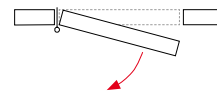


PG IRON

PG 120 / PG 180 / PG 240

Hinges with washer and drop profile for installation on doors by welding. High resistance to deformation. Available in iron and zinc-plated iron.



Outside materials

- body: steel
- adjustable cap: carbon steel
- washer: stainless steel

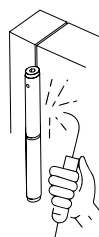
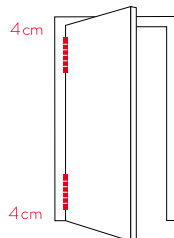
Inside materials

- inner axle: stainless steel AISI 304 (120 and 180) or steel (240)
- inner spring: stainless steel blades set (120) or steel blades set (180 and 240) with protective grease

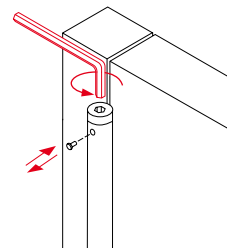
Performance

- application: suitable for indoor/outdoor installation
- automatic return: yes
- adjustable return power: yes
- maximum door opening: 180°
- working cycles: up to 500.000

Proper installation

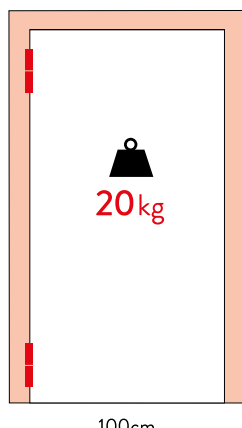
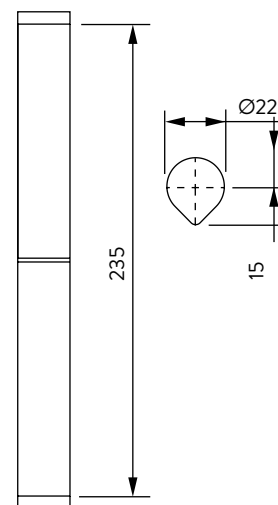
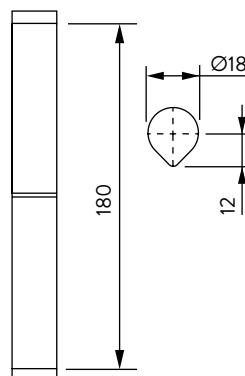
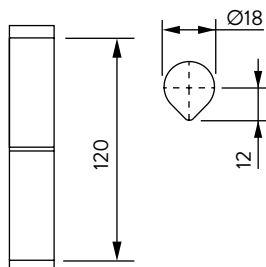


Tension



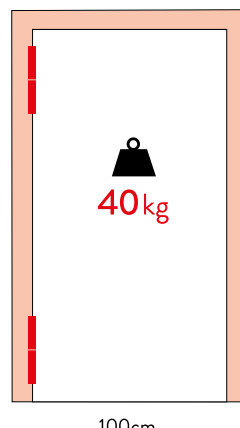
3-points adjusting cap

PG WITH WASHER



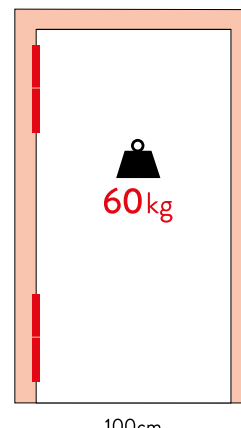
20kg

100cm



40kg

100cm



60kg

100cm