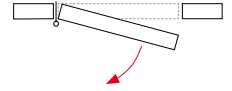


PG SST

PG 120 / PG 180 / PG 240

Hinges with washer and drop profile for installation on doors by welding. Made of stainless steel AISI 304. High resistance to deformation.



Outside materials

- body: SST AISI 304 polished
- adjustable cap: SST AISI 316
- washer: stainless steel

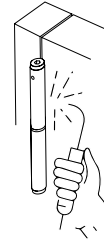
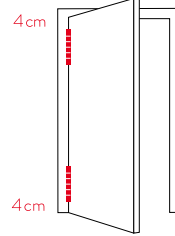
Inside materials

- inner axle: SST AISI 304
- inner spring: steel (240) or stainless steel (120 and 180) blades set with protective grease

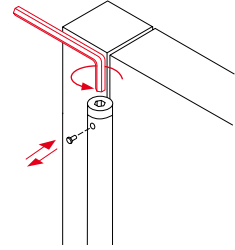
Performance

- application: suitable for indoor/outdoor installation
- automatic return: yes
- adjustable return power: yes
- maximum door opening: 180°
- working cycles: up to 500.000

Proper installation

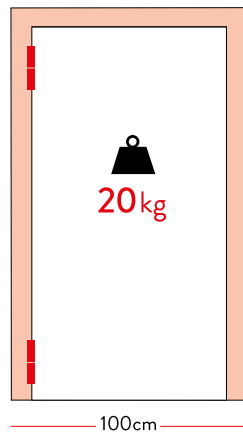
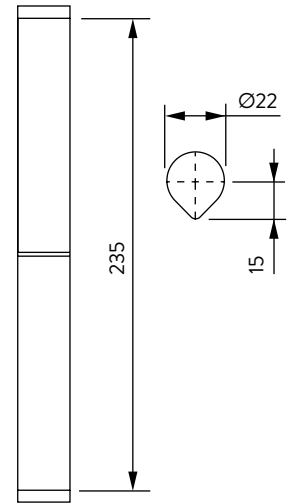
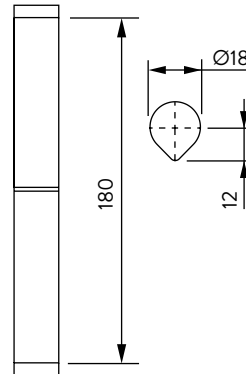
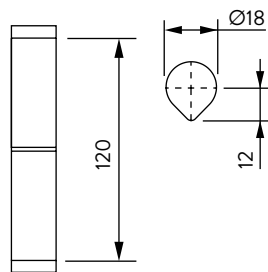
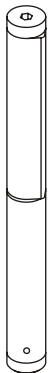


Tension

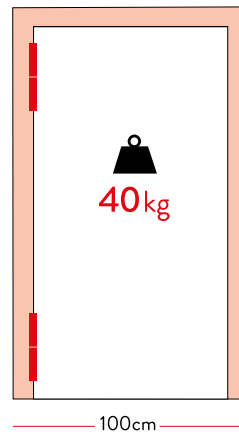


3-points adjusting cap

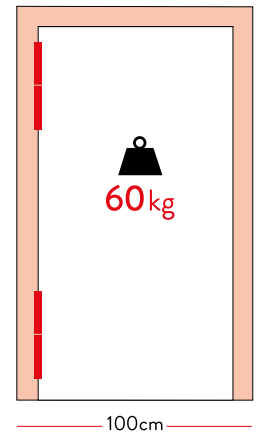
PG WITH WASHER



100cm



100cm



100cm